

Water Insight / Tartu Observatory

# Hand held spectrometer (WISP) for MERIS validation

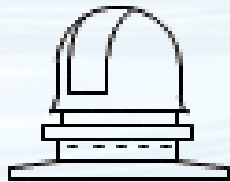
Martin Ligi

Lisbon 2011

# About the presenter

- PhD student in Tartu University/Tartu Observatory
- On secondment at Water Insight – WaterS project

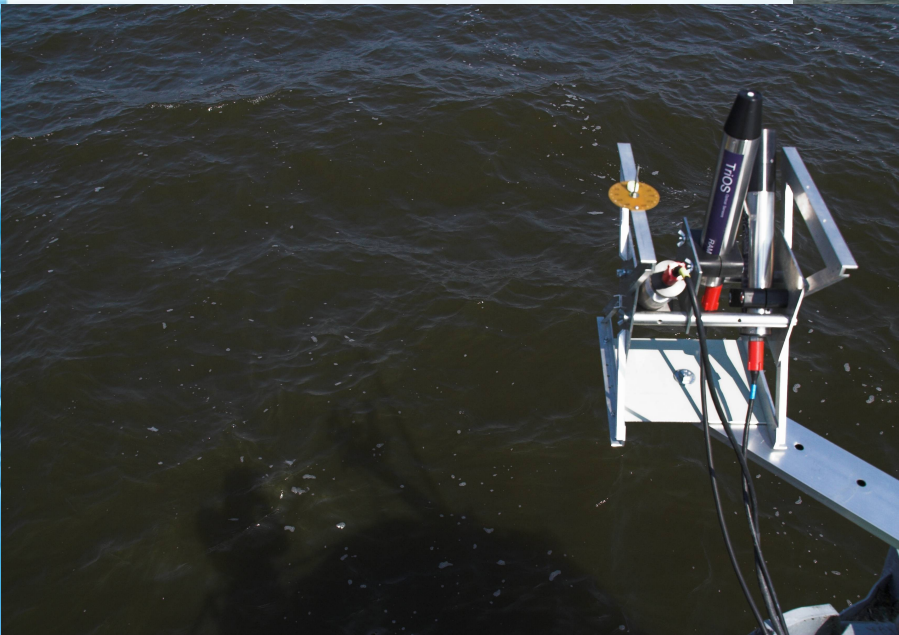
waters



TARTU  
OBSERVATORY

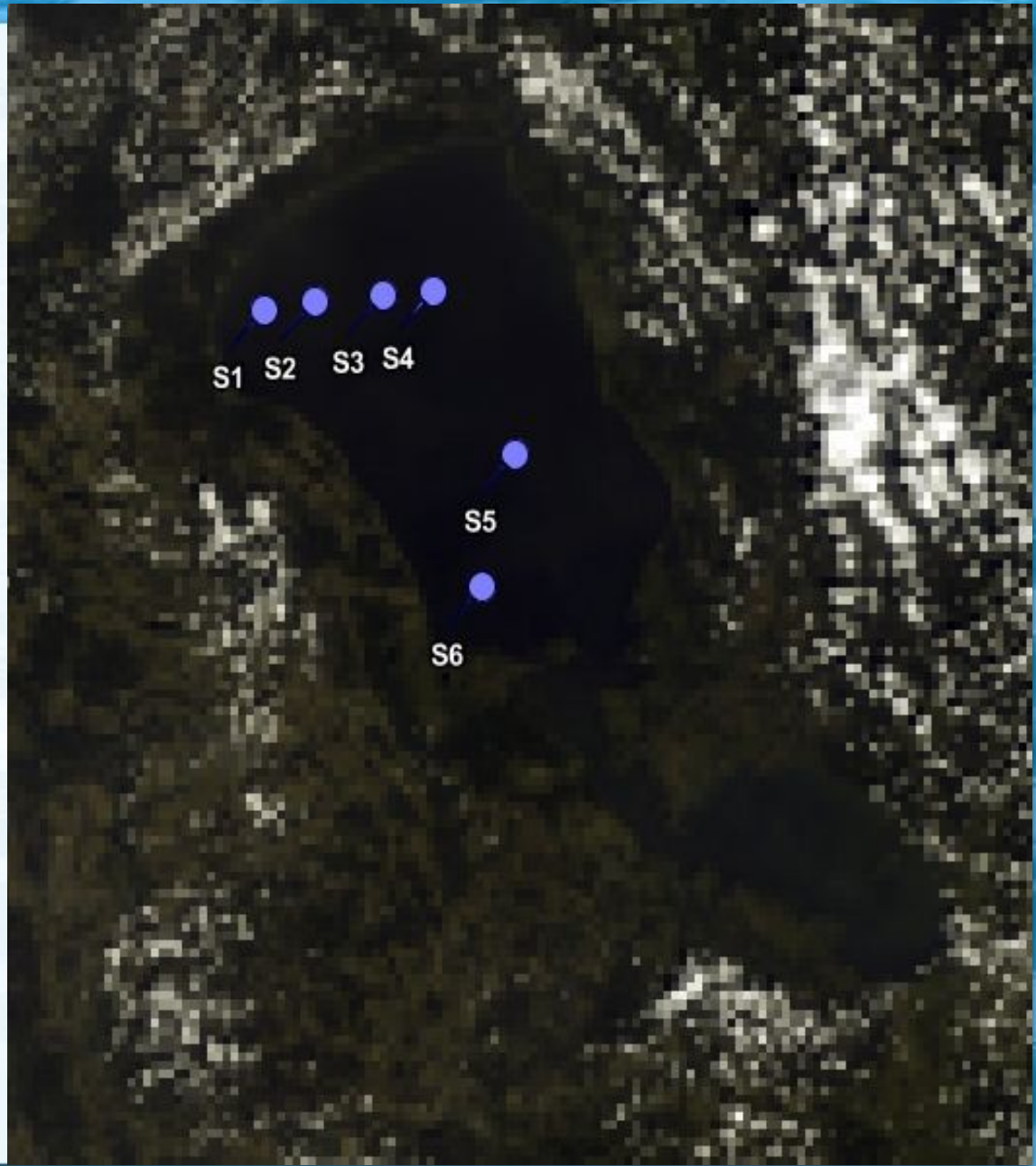


# Devices used



# Field work

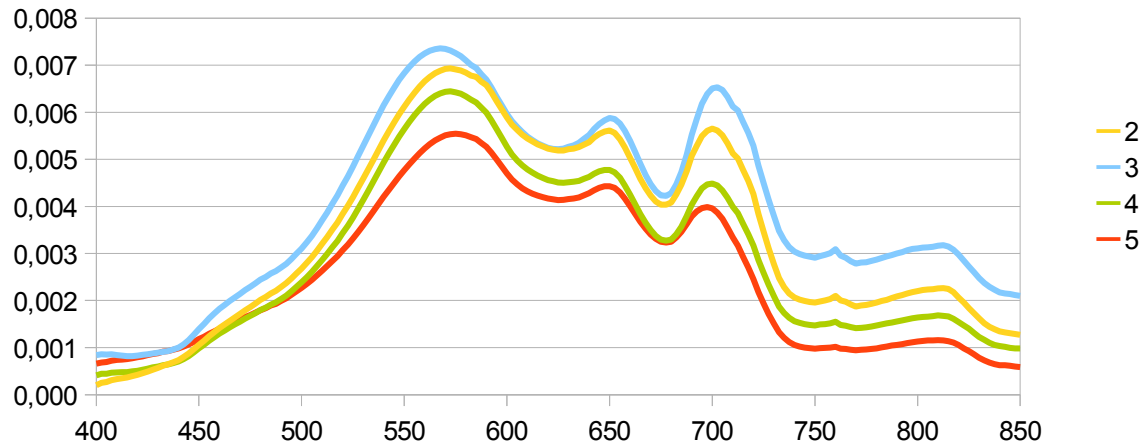
- Lake Peipsi  
27.07.2011



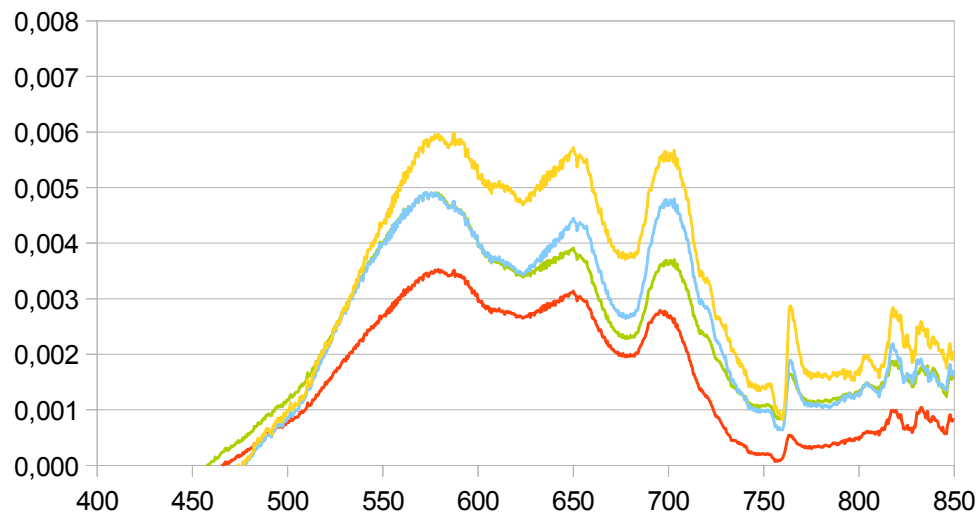


# Reflectances

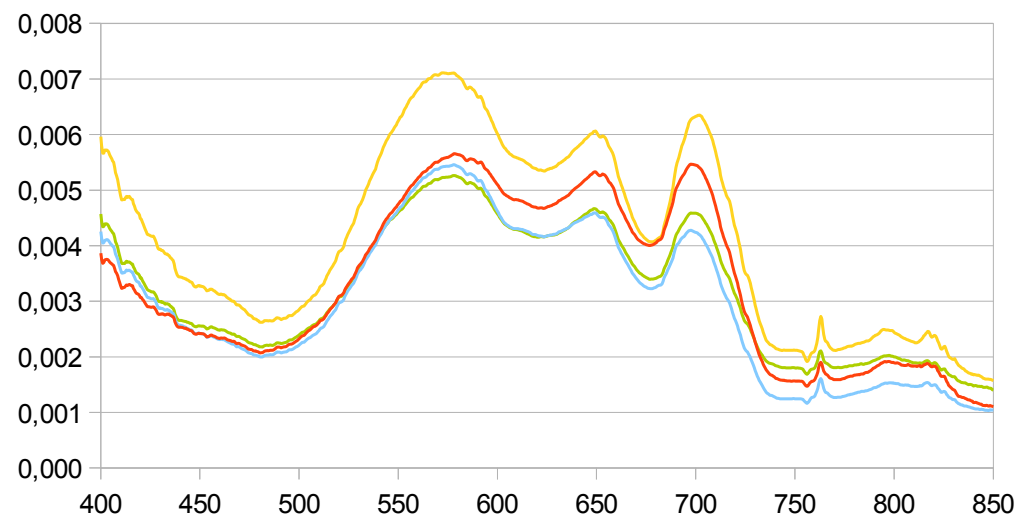
Ramses



Tartu Observatory WISP

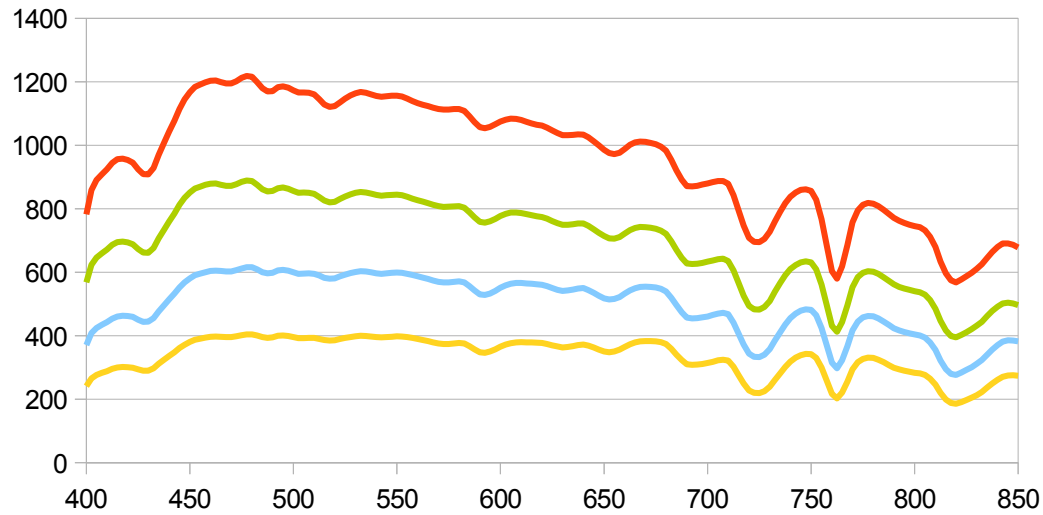


EMHI WISP

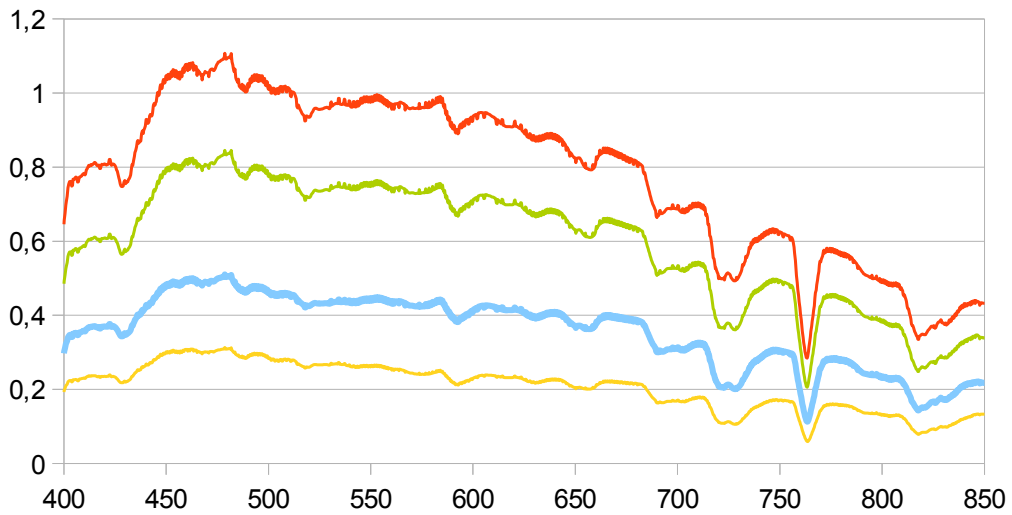


# Sky Irradiance

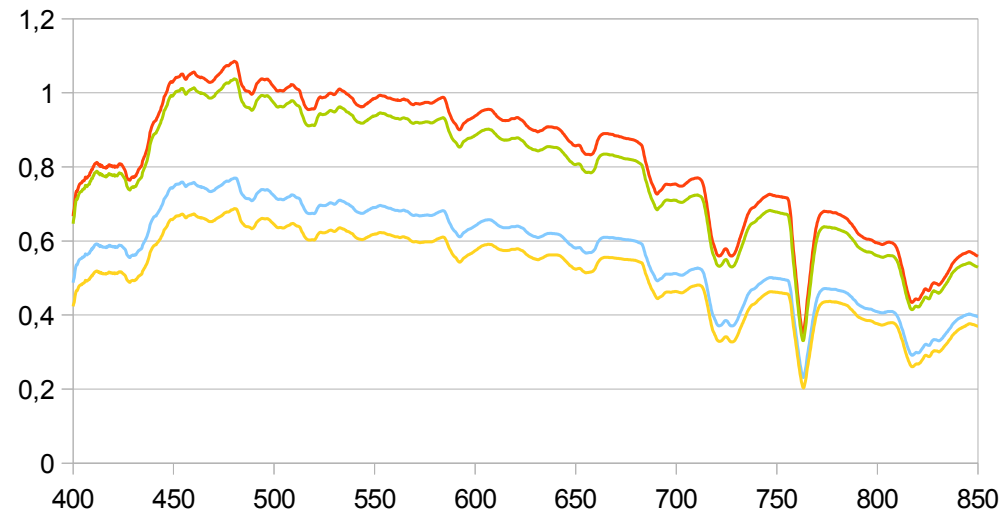
Ramses



Tartu Observatory WISP

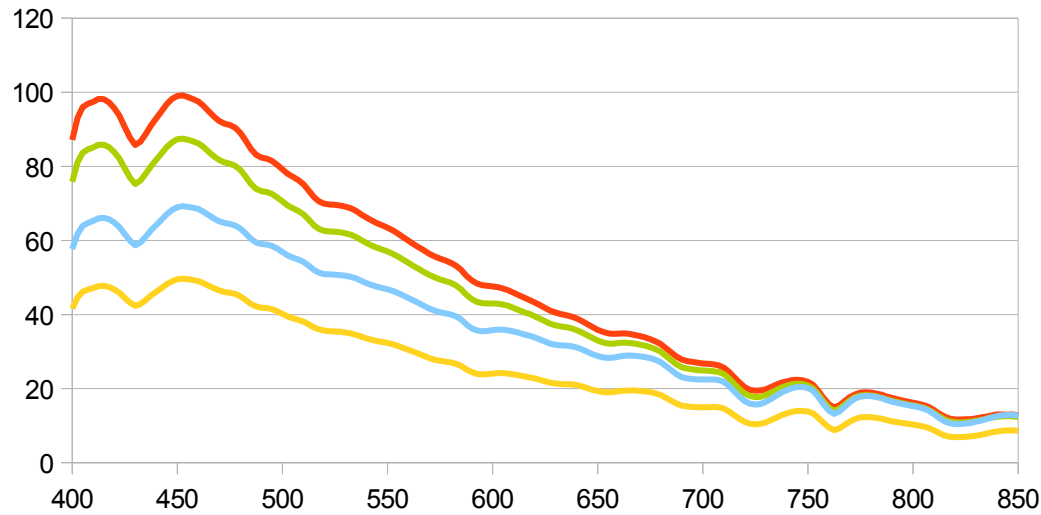


EMHI WISP



# Downwelling radiance

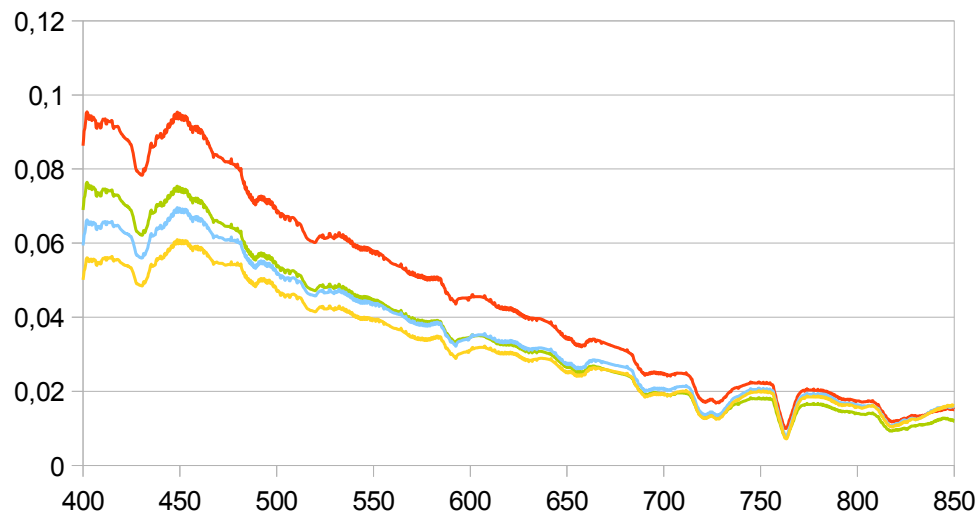
Ramses



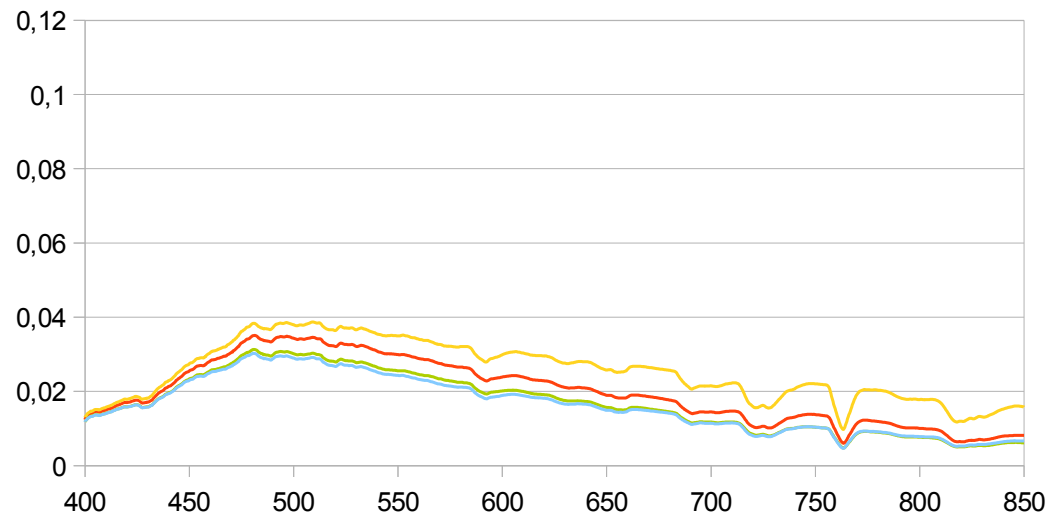
2  
3  
4  
5



Tartu Observatory WISP



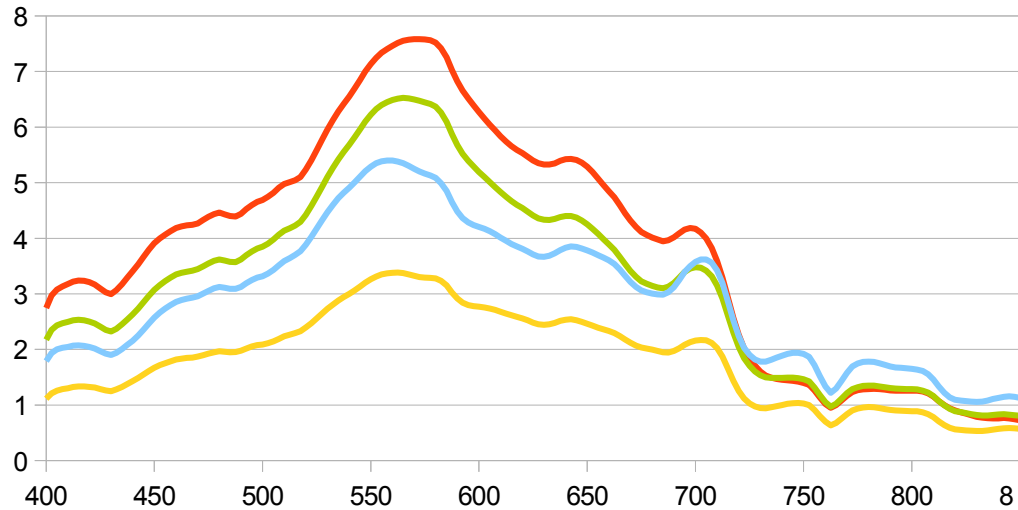
EMHI WISP



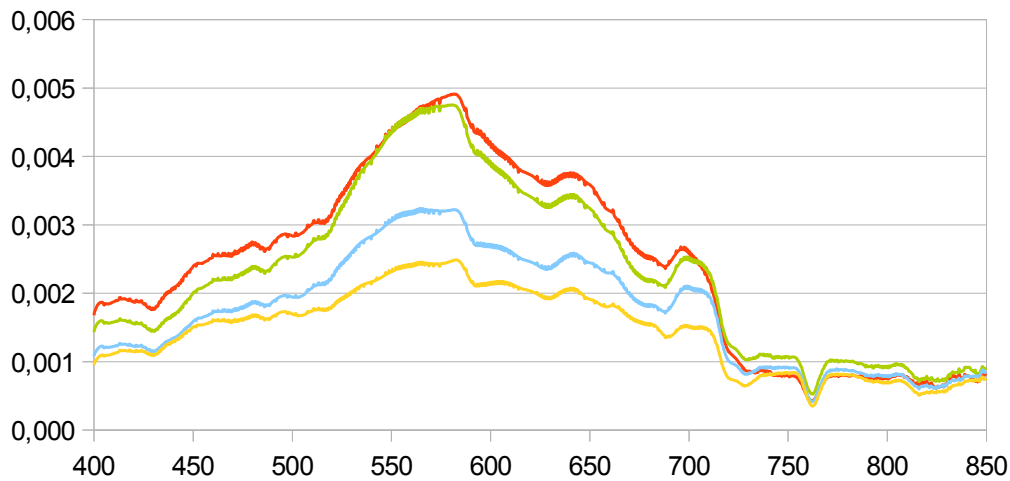


# Upwelling radiance

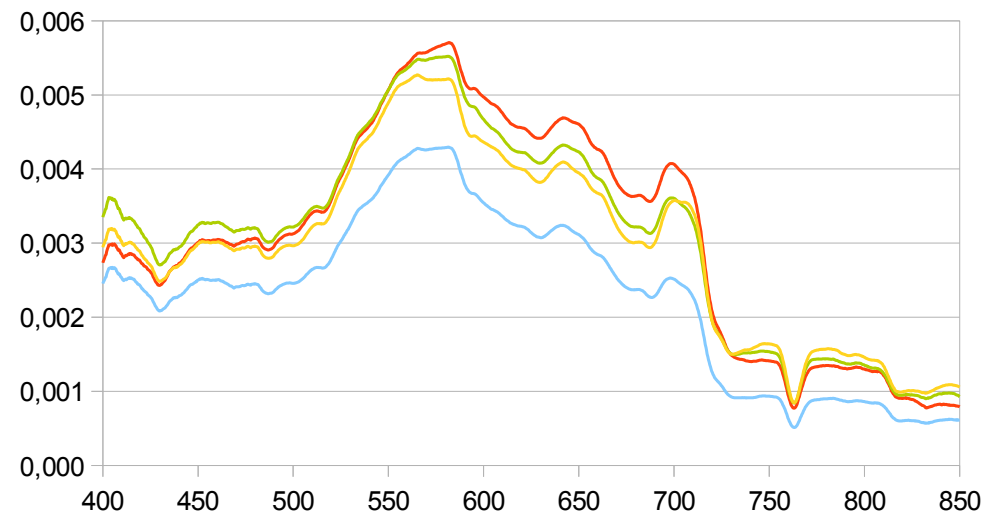
Ramses



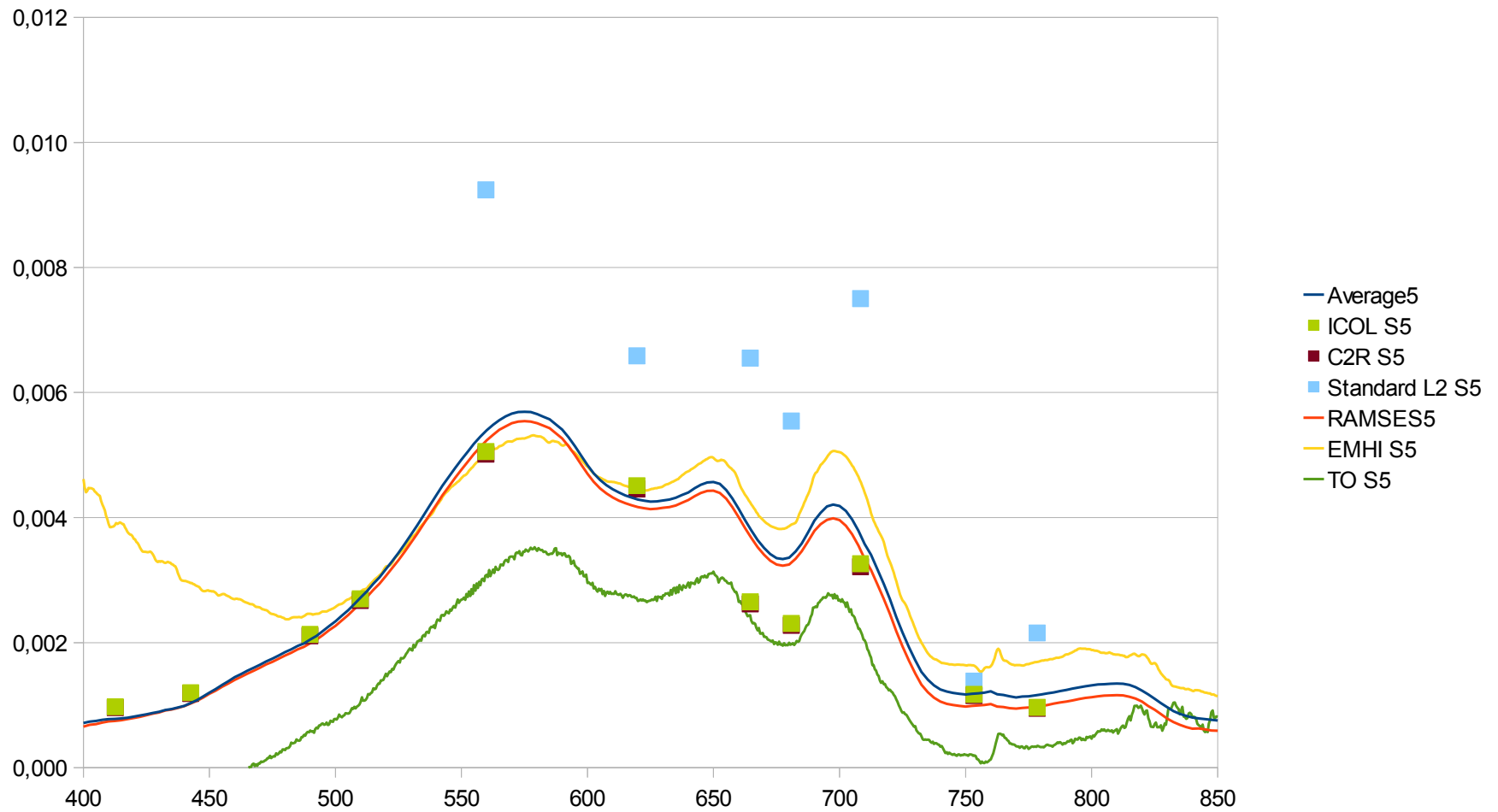
Tartu Observatory WISP

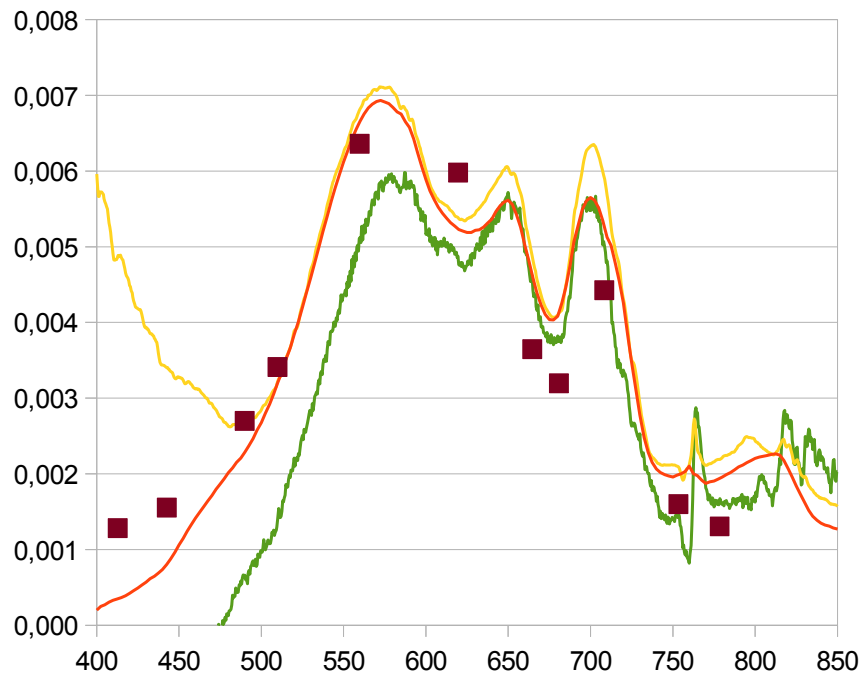


EMHI WISP



# With MERIS





■ C2R S2  
 — RAMSES2  
 — EMHI S2  
 — TO S2

