

Conclusions Of Workshop

**ESTEC
20 April 2005**

Conclusions

- ***ERS-2 Performance is outstanding:***
 - Satellite is smoothly ageing (Work-around implemented for Gyros and Tape Recorder anomalies)
 - GOME is operating nominally with the exception of the lamp
 - Platform can support the operations for some more years

Conclusions (2)

- ***GOME has been a cost effective and unique success, proving the concept***
- ***It established European Research at the forefront of remote sensing of atmospheric composition***
- ***It has built up unique capability and allowed preparing for other missions and retrievals for instruments such as Sciamachy, OMI and GOME-2***
- ***It has generated a >10 years data set for future reference***
- ***Atmospheric Chemistry, Meteorological and Air Pollution Applications are growing***
- ***All instrument data successfully reprocessed to the latest available GDP***
- ***New initiatives to follow and build up on the success of GOME in particular for tropospheric research and applications***
- ***Operation of ERS-2 GOME needs to be extended to generate sufficient overlap with METOP A satellite***

Summary of numbers

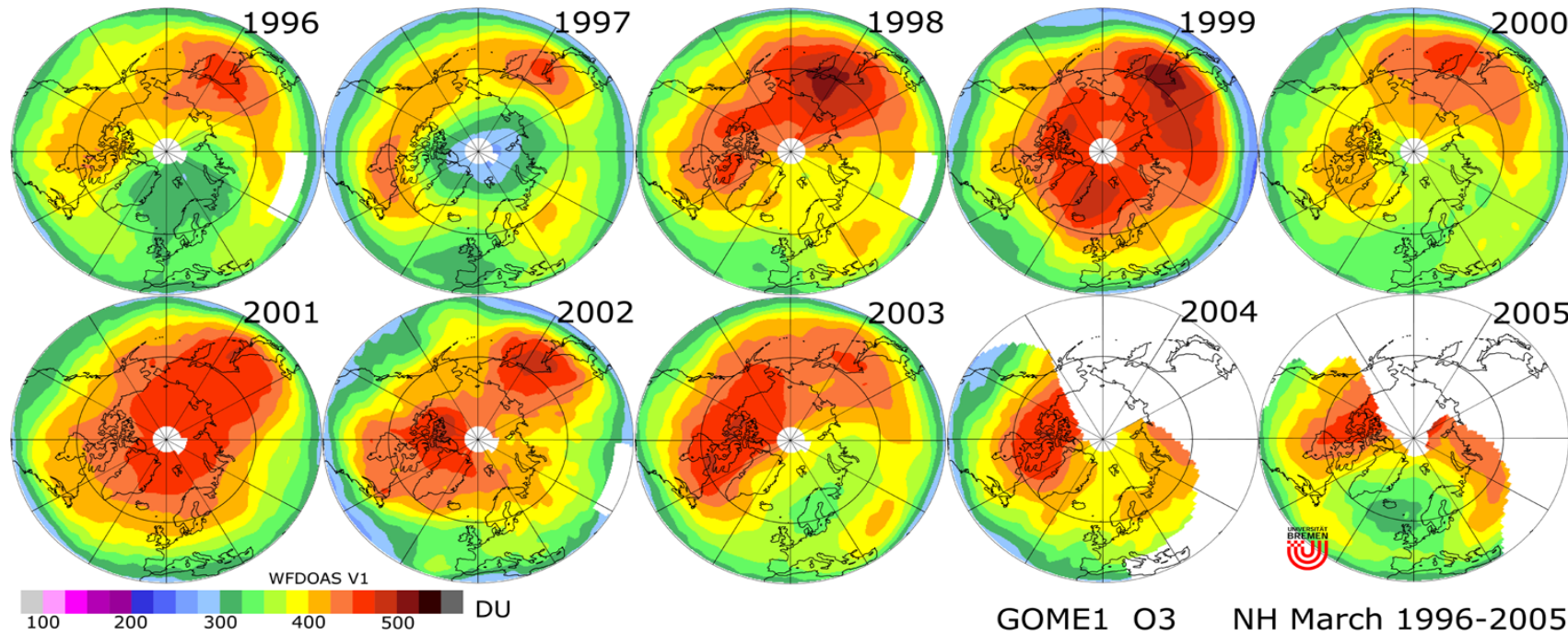
- A total of **50778 orbits** are being processed since July 1995
 - *Level 0 data*
 - **1.4 TB**(32 Mbyte per orbit)
 - *Level 1 off-line data*
 - **700 GB**(14 MB per orbit)
- **Products of around 2.5 days are bundled in one CD**
 - **28 institutes** order the products regularly (initially 9)
 - **37324 CDs** delivered since 1995

Summary of Numbers

- **Level 2 off-line data**
 - **30 GB** (0.7 MB per orbit)
 - *Products of one month are bundled in one CD*
 - **30 institutes** order the products regularly (initially 15)
 - **8503 CDs** delivered since 1996

Acknowledgements

- ***The success of the GOME mission is based on the hard work of the people at these institutions:***
 - GOME industries: Galileo Avionica (I), Laben (I), TNO-TPD (NL), Astrium (D), RAL (UK), Innoware (DK), DLR-DFD (D), Dutch Space (NL), S & T (NL)
 - GOME scientific institutions: IFE Bremen (D), RAL (UK), KNMI (NL), SRON (NL), BIRA (B), SAO(USA), NASA (USA), IUP (D), MPI (D), NILU (N), ZSW (D),
 - ESA establishments: ESTEC, ESRIN, ESOC, ESA HQ



Ten Years of GOME1 Total Ozone