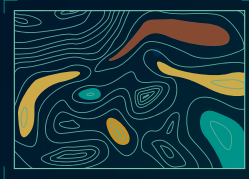


DID YOU KNOW THAT PROBA-V?

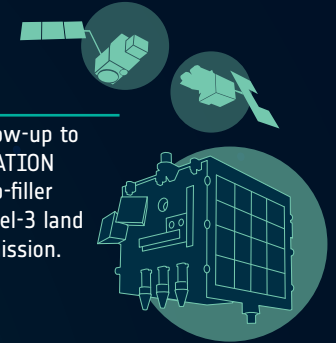
WHAT?

PROBA-V is an ESA satellite, which is the size of a washing machine but is tasked with a full-scale mission: to map **land cover** and **vegetation** growth across the entire planet every day.



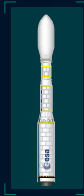
WHY?

Developed as both a follow-up to the 15-year SPOT-VEGETATION mission, as well as a gap-filler for the Copernicus Sentinel-3 land and ocean observation mission.



WHEN?

Launched on 7 May 2013, on a Vega rocket, with a Sun-synchronous polar orbit, at **820 km** altitude, crossing the equator every morning between 10:30 and 11:00 local time.



WHERE?



Developed by a full **Belgian consortium**, with various partners involved, including **ESA**.

WHATS NEXT?

Mission operations will end on 30 June 2020, after 7 successful years. An experimental phase will continue until October 2021.

<https://blog.vito.be/remotesensing/probav-whatsnext>

GOAL

PROBA-V has a new version of the Vegetation imager, previously flown on the SPOT satellites. This instrument can distinguish between different land cover types and plant species, including crops, to reveal their health, as well as detect water bodies and vegetation burn scars.



DATA AND USERS

1 Petabyte archive of data, with over **600,000 direct products downloaded** worldwide, more than **120 nationalities** catered, and some 1290 different companies served.



TIME LAPSES

This mini satellite offers amazing time lapses of various Earth observations, including freezing over of lakes; seasonal variations in deserts; glacier's contributions to sea-level rise and other such events:

<http://proba-v.vgt.vito.be/en/timelapses>



WHO?

Copernicus global land services uses PROBA-V data to create various end-user products. Several biophysical variables of this land service portfolio are based on PROBA-V products. These products constitute an historical archive, which is crucial for many environmental applications.

DATA ACCESS

<http://proba-v.vgt.vito.be/en/product-access>



For more information visit:
<https://bit.ly/34QMIwV>